

IMPACT

KANSAS STATE UNIVERSITY

FALL 2015

COLLEGE OF ENGINEERING



ENGINEERING LEADERSHIP INITIATIVE

PAGE 8



FROM THE DEAN

This fall, the highest increase in enrollment on campus occurred in the College of Engineering. We logged a remarkable 3,666 undergraduate students, up from 3,503 undergraduate students a year ago. Our graduate programs, also on the rise, showed master's degree students increasing from 292 to 310 and Ph.D. students growing from 164 to 175.

This says three things to me — the college is rapidly approaching the targeted number of 3,750 students essential to meet the state of Kansas' requirements of the University Engineering Initiative Act by 2023. We are making strong strides as well toward the goal of increasing our graduate student numbers and, third, engineering is THE degree of choice in the 21st century.

With a college vision stating that by 2025, we will be recognized as one of the nation's Top 50 Public Research Colleges of Engineering, in addition to President Schulz' 2025 vision for the university to become a top-50 research university, it's imperative we put quality programs into place and successfully implement them in order to reach these lofty goals.

You will see our progress towards that in these pages of *Impact* with stories on our new Academic Success Center — with mentors, advisers and training for academic and career success, as well as the Engineering Leadership and Innovation program — tying together coursework, corporate partnerships and leadership experiences from student-led teams.



TOM PAULSON, LEFT, ADVISORY COUNCIL CHAIR, AND DEAN DARREN DAWSON

Directly linked to these are articles about growth in our undergraduate research program, growth in our number of endowed faculty positions, growth in faculty numbers overall, and a growing excitement as each passing day bring us closer to "occupation" of the new Engineering Hall and all it will offer for every facet of the educational experience.

You'll also read about our key partnerships with alumni and friends. By joining in the spirit of the university's recently launched Innovation an Inspiration campaign, each is so very vital to every accomplishment and success story we have to tell.

It is THE time for involvement in engineering education. I could not be more proud to serve as dean.

— Darren Dawson, dean

IMPACT

KANSAS STATE UNIVERSITY

FALL 2015

COLLEGE OF ENGINEERING



IN THIS ISSUE



EDUCATION



LEADERSHIP



EXCELLENCE



RESEARCH

2	Academic Success Center
4	UEIA
6	Company of the Year — Bartlett & West
7	NAE lecture series
8	Engineering Leadership and Innovation
9	Faculty awards
10	Endowed positions
11	Undergraduate research
12	Seaton Society roll call
16	Alumni news
17	News from around the college

IMPACT

is published twice a year by the Kansas State University College of Engineering, Manhattan, KS 66506. It is available on the web at engg.ksu.edu.

Issue No. 35, Fall 2015
 Editor Mary Rankin
 Photographers Bob Davis, K-State Communications and Marketing
 Design Lynda Carter, Bob Davis
 Contributing to content: K-State Communications and Marketing, K-State Foundation

We are interested in following the career paths and accomplishments of our alumni, focusing on promotions, advancements, awards and honors, job changes and of course, retirements, as well as death notices. Please send your information in these categories to —

Impact Editor
 College of Engineering
 128 Dole Hall
 1525 Mid-Campus Drive North
 Manhattan, KS 66506
 email: impact@engg.ksu.edu



NEW INITIATIVE HELPS ENGINEERING STUDENTS STAY ON TRACK

By Hayli Morrison

The College of Engineering's new Academic Success Center at Kansas State University is lighting the way for student success now and in the future. For many first-year students, managing schedules, finances and academics can be very overwhelming. The goal of the Academic Success Center is to give students an individualized option with the mentors, advisers and training that will empower them to have a successful experience throughout college and beyond.

The Academic Success Center staff will provide academic advising for first-year and returning students to strengthen and improve upon their progress. The Academic Success Center will also give engineering students one-stop access to academic peer tutoring, alumni mentoring, a first-year instructor, computer workspaces and programs designed to promote student success. These initiatives will welcome, empower and encourage students to reach their fullest potential. Providing a sense of belonging will help students navigate the pressures of college life and earn their degree.

With group study stations, a student conference room and several multimedia flex rooms, the Academic Success Center will emphasize the skill of working in a team setting. This will help ensure that students are fully prepared to join the rapidly-changing workforce after graduation.

The Academic Success Center will also offer workshops on topics like study skills, time management, engineering careers and internships. The center's Collaborative Learning Laboratory will serve as home to Scholars Assisting Scholars, or SAS, a program that hires upperclassmen to tutor peers while developing their own teaching and leadership skills. Hard-working sophomore, junior and senior SAS tutors will be paid to sit in on their assigned student's course, see and hear the lecture, and then work with the student on their assignments and preparations for their exams.

"At K-State, they focus on providing a quality, personal education," said Austin Green, a senior studying software engineering who has used Scholars Assisting Scholars during some of his more difficult college classes. "When I visited K-State, it felt like I had a name, and at other schools I felt like I was a number."

That's exactly the sort of compelling impression the college hopes to continue generating as it opens its 108,000-square-foot Phase IV addition in the next few months.

"Phase IV will provide a home for important initiatives like the Academic Success Center," said Darren Dawson, dean of the College of Engineering. "It will create a welcoming, supportive environment for tomorrow's engineering leaders to grow and thrive personally, academically and professionally."

INVESTING IN STUDENT SUCCESS

Ike Evans understands the life of a stressed college student. The 1965 electrical engineering graduate spent his time at Kansas State University balancing a demanding course load while playing on the varsity baseball team and working four part-time jobs.

"We didn't have any money. It was really a challenge," Evans said, recalling the time when he pitched a varsity baseball game, then wore his team uniform to his physics exam immediately following.

Now the retired CEO of Meritor, Evans reflects on his success with humility and acknowledges those who helped him along the way. He credits Letty, his wife of 52 years, as his best friend and teammate. In addition, a number of fellow engineering students "went out of their way" to help Evans academically and personally, and he always felt K-State faculty and leadership were personally invested in his achievements.

"To be honest, I don't know if I would have been successful without them," he said.

Evans now wants to help students like him who show potential but just need a little help. That's why the couple recently gave \$1 million to support student development through the Academic Success Center in the College of Engineering.

The center will offer academic peer mentoring, academic advising, a first-year instructor, collaborative workspaces and career mentoring from K-State alumni.

"I was very fortunate that even though there wasn't something like this at the time, it all came together for me," he said. "We're trying to help that process now for others. It's for students who need a little encouragement to get them excited about the learning process."

The Academic Success Center will debut in the college's new Phase IV addition in early 2016. It is expected to increase student recruitment, retention and graduation rates.

"The tremendous generosity of Ike and Letty Evans speaks volumes to the importance of this program," said Dean Darren Dawson.



Ike and Letty Evans give \$1 million to launch Academic Success Center

"We've already seen how peer mentoring works positively in our college, and this more expansive approach will help even more students."

— Dean Darren Dawson

Three join Academic Success Center

Three new faces have been welcomed to the offices of student services and retention, diversity and inclusion. They will be located in the recently renamed and refurbished Fiedler Learning Commons, a part of the newly launched Academic Success Center in the college.

Mary Vesper and Mackenzie Brown joined the college in June. Vesper is an Academic Success Center adviser who heads an academic

mentoring program for improving students' study skills. Brown is the Academic Success Center coordinator, working with students, programs and activities of the center. Emily Dringenberg joined the college in August after completing her doctorate in engineering education from Purdue University, and is a first-year program instructor.



FROM LEFT, MACKENZIE BROWN, MARY VESPER, EMILY DRINGENBERG

**INNOVATION
&
INSPIRATION**

Invest in student success and join Innovation and Inspiration: The Campaign for Kansas State University. Call 785-532-7609, e-mail engineering@found.ksu.edu or log on to inspire.k-state.edu to learn more.



COUNTDOWN UNDERWAY

The College of Engineering remains on track for reaching the goals of the University Engineering Initiative Act— to increase the number of engineering graduates by almost 60% in the state of Kansas over a 10-year period.

Under the direction of the Kansas Department of Commerce working with the Kansas Board of Regents and K-State, KU and WSU, the plan targets engineering education efforts to fuel economic growth and business success in Kansas—adding approximately 600 new engineers into the workforce during that time span.

Also within that time frame, the college will add more than 160 new graduates to its graduation class, the student body will grow by at least 750 students, faculty will expand by 35 positions and facilities will increase by more than 100,000 square feet.



Furnishings begin arriving, being installed

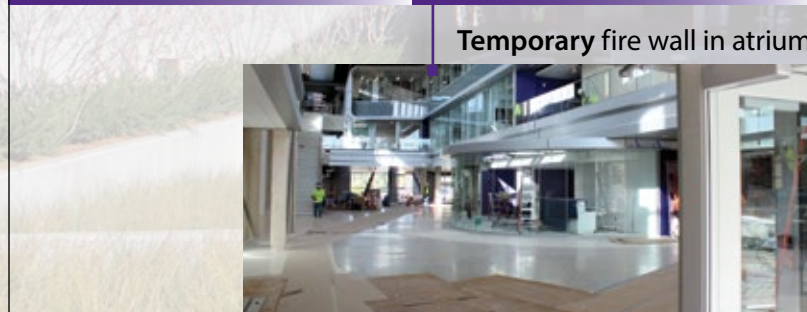


CIS department begins to move from Nichols Hall
 Recruiting office occupies new space
 SAS program becomes fully operational in new collaborative learning lab space



Major move of offices and faculty of ECE and CIS departments

MID-SEPTEMBER MID- OCTOBER NOVEMBER EARLY DECEMBER WINTER BREAK JANUARY



Temporary fire wall in atrium comes down

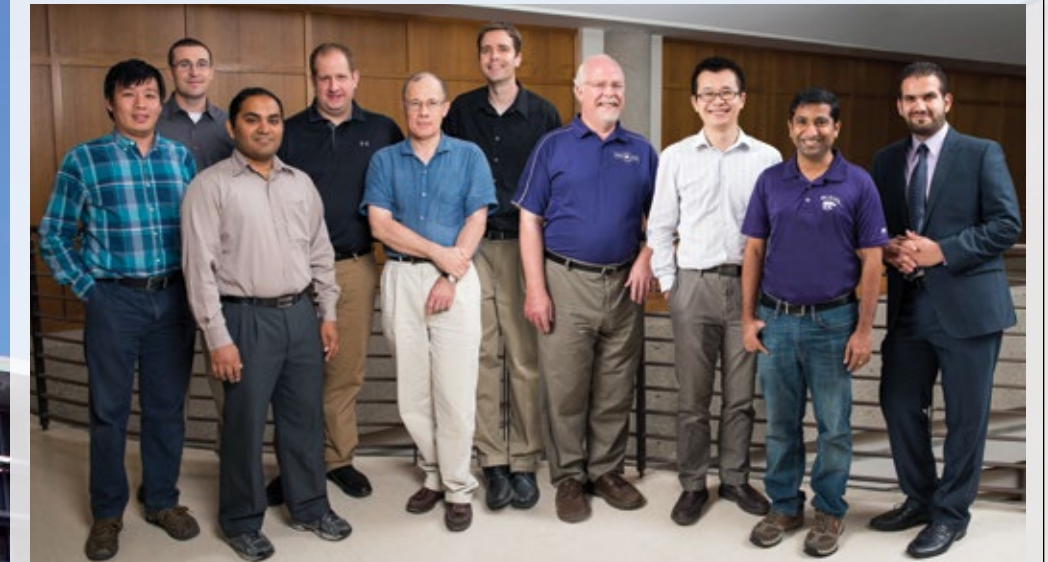


Internal open house for faculty, staff and students



Full load of classes begin for spring semester
 Design teams move into new spaces

NEW FACULTY



FOURTEEN NEW FACULTY HAVE JOINED THE COLLEGE OF ENGINEERING IN 2015, FROM LEFT TO RIGHT, JAMES CHEN, MNE, ASSISTANT PROFESSOR; WALTER MCNEIL, MNE, ASSISTANT PROFESSOR; ARAVIND SURESH, CHE, ASSISTANT PROFESSOR; ERIC FITZSIMMONS, CE, ASSISTANT PROFESSOR; STEPHANE FAROULT, CIS, INSTRUCTOR; RYAN HANSEN, CHE, ASSISTANT PROFESSOR; PHILIP UGOROWSKI, MNE, INSTRUCTOR; DONG LIN, IMSE, ASSISTANT PROFESSOR; PRATHAP PARAMESWARAN, CE, ASSISTANT PROFESSOR; AND MAHER SHEHADI, MNE, INSTRUCTOR.

NOT PICTURED: HEIDI WAGNER, ARE/CNS, ASSISTANT PROFESSOR; PAVITHRA PRABHAKER, CIS, ASSISTANT PROFESSOR; DEANDRA CASSONE, IMSE, ASSOCIATE PROFESSOR; AND ROBERT DUTEAU, MNE, INSTRUCTOR.

Kansas State University • College of Engineering UEIA SCORECARD

RESULTS BY ACADEMIC YEAR								
	BASELINE	'11-12	'12-13	'13-14	'14-15	'15-16	'21-22
Enrollment	2960	3056	3172	3327	3503	3666	➔	3750
Engineering grads	423	483	472	531	488		➔	587
Faculty	129	141	142	148	149	148*	➔	184

Data from the K-State Office of Planning and Analysis

*CURRENT YEAR FACULTY NUMBERS DO NOT REFLECT AN ADDITIONAL, ONGOING 15 ACTIVE SEARCHES — FIVE RETIREMENT/REPLACEMENT AND 10 NEW POSITIONS AS YET UNFILLED.



2015 COMPANY OF THE YEAR —

The engineering and technology firm Bartlett & West Inc. has been named the 2015 Company of the Year for its extensive support of the College of Engineering.

The College of Engineering Company of the Year is selected annually, based on demonstrated commitment to engineering education, as well as high standards and quality performance in the engineering profession. Bartlett & West engages with the college by financially investing in engineering students, facilities, programs and general excellence, while also hiring many interns from Kansas State University. "We really focus on a diversity of giving," said Keith Warta, president of Bartlett & West and a fourth-generation K-Stater who earned a civil engineering degree in 1984. "It's about supporting students, supporting faculty and then creating a lasting facility that will help many people into the future."

Bartlett & West, with nearly 500 employees, has engineering and technology offices across 10 states that emphasize community support in each local area. With an office location in Manhattan, the firm has supported Kansas State University for decades through corporate giving and through matching contributions to enhance gifts from individual Bartlett and West employees.

"K-State engineering is very fortunate to have a corporate partnership with Bartlett & West," said Darren Dawson, dean of the College of Engineering. "They continuously strive to assist us in providing a quality education for our students."



DAMIR NOVOSEL

NAE LECTURE SERIES —

With a reliable and efficient electrical grid operation critical to society, the electrical utility industry has undergone significant changes in the last decade due to technology trends, environmental drivers and weather patterns, changing public needs and regulatory requirements.

Damir Novosel, president of Quanta Technology, a subsidiary of Fortune 500 company Quanta Services, presented "Electrical Grid — Trends and Innovations" at the College of Engineering National Academy of Engineering Seminar Series Oct. 1.

Novosel highlighted how the electrical grid has developed since the first electric power plant in New York in 1882, challenges and opportunities facing modern grids, and how industry trends and innovation will shape the future grid.

"The electrical power and energy industry in coming decades will be much different from what it is today in order to meet the demands of the society and address challenges," Novosel said. "We are at a crossroads in making business and technical decisions that will allow us to optimally and cost effectively manage the grid."

To read more about Novosel and the lecture, and to view the presentation online, go to <http://www.engg.ksu.edu/ergp/lectures/nae/bios/novosel.html>





LEADING THE WAY

ELI PROGRAM PREPS ENGINEERING GRADS FOR LEADERSHIP

In modern engineering practice, leadership skills are as crucial as technical skills — and not just in the executive suite. With the newly launched **Engineering Leadership and Innovation**, or ELI program, the College of Engineering will prepare K-State graduates to be tomorrow's industry, government and educational leaders.

This unique, two-year undergraduate initiative will train junior- and senior-level students with the business acumen and team management skills required of contemporary leaders. Students will have the opportunity to take leadership and business courses, consult with industry mentors and practice leadership on a student-led engineering team.

PROVEN RESULTS

Launch is a new publication produced by the College of Engineering to document accomplishments of our student creative inquiry teams. Each year, more than 20 of these teams — a highly successful blend of undergraduate research and practice — compete in regional, national and international events. Visit www.engg.ksu.edu/launch to learn more about each student group and its achievements.



LEADERSHIP DEVELOPMENT

Engineering Leadership and Innovation will leverage K-State strengths. Students will take courses at K-State's Staley School of Leadership Studies and the College of Business Administration. It will empower this generation to lead well through formal training, active assignments and applied practice.

INDUSTRY MENTORS

Students selected for Engineering Leadership and Innovation will be among the most competitively recruited graduates in the workforce. Industry investment through individual mentoring and team collaboration will prepare students with the career advice, strengths assessments and growth opportunities vital to their success. The college will engage corporate partners who find it mutually beneficial to network with tomorrow's leaders.

CREATIVE INQUIRY

Students will work with the college's creative inquiry teams — such as quarter-scale tractor team, robotics team and others — all of which have an enduring record of national competition success. This provides a realistic setting for students to practice newly-learned leadership techniques, followed by a 360-degree evaluation of their leadership performance.

While investment opportunities still remain for Engineering Leadership and Innovation, the College of Engineering is thankful for the following companies who help make this important program possible. Learn how you can invest by contacting engineering@found.ksu.edu or 785-532-7609.



2014 - 2015 FACULTY AWARDS



SEATED, LEFT TO RIGHT: LISA WILKEN, BAE, OUTSTANDING ASSISTANT PROFESSOR AND DEAN'S AWARD OF EXCELLENCE IN SERVICE; JULIA KEEN, ARE/CNS, MYERS-ALFORD MEMORIAL TEACHING AWARD; CHRIS AHERN, ARE/CNS, CLAIR A. MAUCH STEEL RING ADVISOR OF THE YEAR AWARD; KIMBERLY WAGGLE KRAMER, ARE/CNS, CHARLES H. SCHOLER FACULTY AWARD; AND STACY HUTCHINSON, BAE, MYERS-ALFORD MEMORIAL TEACHING AWARD

STANDING, LEFT TO RIGHT: RONALDO G. MAGHIRANG, BAE, JAMES L. HOLLIS AWARD FOR EXCELLENCE IN UNDERGRADUATE TEACHING AND ROBERT R. AND LILA L. SNELL EXCELLENCE IN UNDERGRADUATE TEACHING AWARD; BILL ZHANG, ARE/CNS, OUTSTANDING ASSISTANT PROFESSOR; DONGHAI WANG, BAE, FRANKENHOFF OUTSTANDING RESEARCH AWARD; BOB PETERMAN, CE, DEAN'S AWARD OF EXCELLENCE IN RESEARCH; BILL KUHN, ECE, MYERS-ALFORD MEMORIAL TEACHING AWARD; AND PHILIP BARNES, BAE, LARRY E. AND LAUREL ERICKSON PUBLIC SERVICE AWARD

NOT PICTURED: JOHN DEVORE, ECE, DEAN'S AWARD OF EXCELLENCE IN TEACHING; AND MUSTAQUE HOSSAIN, CE, DEAN'S AWARD OF EXCELLENCE IN RESEARCH

2016 SPRING SEMESTER CALENDAR

Jan. 19

Spring semester begins

Feb. 25 - 28

IIE South Central Regional Paper Conference

March 3

Eyestone Lecture by Michelle Munson
1:30 p.m., Engineering Hall Auditorium

March 12 - 20

Spring break

April 1

Phase IV ribbon cutting

April 2

Seaton Society celebration

April 1 - 3

AIChE Mid-America Student Regional Conference

April 15 - 16

Engineering Open House

April 16

All-University Open House

May 13

Graduate School commencement ceremony

May 14

Undergraduate commencement ceremony



INVESTING IN EXCELLENCE

Private philanthropy honors engineering faculty

Kansas State University alumni often recall at least one faculty member who served as mentor, adviser and friend. Indeed, one outstanding professor can change the lives of students for generations to come. Private gifts are vital to recruiting and retaining such high-caliber professors.

Endowed faculty chairs and professorships can fund new research exploration, graduate student support staff and professional travel. These gifts also lend professional credibility — someone considered the college faculty worthy of significant philanthropic investment, and these professors earned that honor.

Five new and three reappointed endowed positions have been named in 2015, bringing the total to 20 in the College of Engineering. New appointees include Charles Burton as the Martin K. Eby Distinguished Professor, Ray Yunk as the John W. and Dorothy M. Burke Architectural Engineering Chair, Mary Rezac as the Tim Taylor Chair in Chemical Engineering, Robert Peterman as the Mark H. and Margaret H. Hulings Chair in Engineering, and Douglas McGregor as the Boyd D. Brainard Departmental Faculty Chair in Mechanical and Nuclear Engineering. Extensions were awarded to Mustaque Hossain as the Munger Professor in Civil Engineering, Brad Kramer as the Ike and Letty Evans Engineering Chair, and Mohammad Hosni as the Charles and Nona Frankenhoff Chair.

The College of Engineering is pleased to introduce its newest endowed faculty, who represent the range of character, passion and vision we've come to expect in the K-State family.



TOP ROW: CHARLES BURTON, ARE/CNS; RAY YUNK, ARE/CNS
BOTTOM ROW: MARY REZAC, CHE; ROBERT PETERMAN, CE; DOUGLAS MCGREGOR, MNE.

To view the entire list of endowed positions go to www.engg.ksu.edu/ergp/recognition/endowed.html.



Join us! Invest in excellence and join Innovation and Inspiration: The Campaign for Kansas State University. Call 785-532-7609, e-mail engineering@found.ksu.edu or log on to inspire.k-state.edu to learn more.



UNDERGRADUATE RESEARCH OPPORTUNITIES

Seventy-three students participated in the College of Engineering's spring 2015 Engineering Undergraduate Research Poster Forum April 30. The event featured 49 poster presentations from eight different engineering departments. Research topics included advanced materials and processes, energy, water and others. Forty-two faculty and graduate students were involved in judging the posters, with many stopping by to view the entries.

"We were excited to see our poster forum double in size this spring," said Noel Schulz, associate dean of research and graduate programs in the College of Engineering. "In addition to gaining experience in presenting their work in a professional setting, the forum also gives students an opportunity to share their research activities with fellow K-State students and faculty."

The following students were selected as winners of the spring 2015 forum:

- Eric Kerschen, senior in mechanical engineering, \$300 first-place award for his poster, "Natural-Based Systems for Indoor Humidification." Kerschen's research adviser is Melanie Derby, assistant professor of mechanical and nuclear engineering.
- Allison Sommer, junior in mechanical engineering, \$200 second-place award for her poster, "Reducing Oxygen from Graphene Oxide by Unconventional Methods." Sommer's research adviser is Gurpreet Singh, assistant professor of mechanical and nuclear engineering.
- Luke Snider, senior in biological systems engineering, \$100 third-place award for his poster, "Corn Dry Milling and Laboratory-Scale Degerming Optimization." Snider's research adviser is Lisa Wilken, assistant professor of biological and agricultural engineering

The forum was sponsored by the Engineering Research and Graduate Programs Office in the College of Engineering. To learn more about the forum and view a full list of participants and posters, visit www.engg.ksu.edu/ergp/undergrad_research/spring_2015.html.



Kansas State University has a goal of advancing to be a Top 50 Public University Research Institution by 2025. One of the seven thematic areas is the undergraduate educational experience. College of Engineering administrators, faculty and staff are committed to undergraduate students having access to research activities across the college. These opportunities include working with world-class faculty and graduate students in top-notch laboratories on cutting-edge research challenges.

Activities in undergraduate research and creative inquiry help undergraduate students in the following areas:

- Extend the learning experience beyond the traditional classroom setting, enhancing the overall experience within the major
- Stimulate additional problem-solving, critical-thinking and personal-reflection skills
- Encourage students to develop communication skills and investigative methods
- Provide real-world experience to increase student interest and create a more effective environment for learning aspects of a discipline
- Promote participation in the continuum of learning — expanding integration of general education and major-specific educational activities



Seaton

SOCIETY

Founders

The Seaton Society awards lifetime membership to its founders, those who have made a commitment in excess of \$100,000 to engineering education excellence as of FY 2014-2015.

- | | | |
|---------------------------------|--------------------------------|--------------------------------|
| Ray and Barb Adee | Ilavere Chesnut | Don Gemaehlich |
| Terrie and Arnold Allemang | Stephen and Karen Clegg | Mark Gerard |
| Betty Allen | Ed and Jaclyn Cochran | Gordon and Joyce Goering |
| Jim and Betty Allen | Charley and Nancy Cole | Charlotte Gollobin |
| John Atherton | Gib and Brenda Compton | Jim and Carolyn Grier |
| Enid Barnett | Merle and Helen Converse | Art Grix and Linda Angold Grix |
| Tom Barrett | Randy and Jacquie Coonrod | Wayne and Barbara Harms |
| Sue Barsamian and Bill Romans | Dick and Mary Elizabeth Corbin | Lucile Hawks |
| Mary Ruth Bedford | Roger and Nancy Coulter | Duane Henderson |
| Alan and Karen Bell | Tara and Terry Cupps | Chris and Kimberly Hess |
| Walt* Bellairs | Stuart* and Janie Curtis | Kevin and Dianne Honomichl |
| Walter Belter | Willene* Dilsaver | Darrell and Nancy Hosler |
| Larry and Judy Bennington | Hazel Dixon | Hud and Jill Huddleston |
| Steve and Deloris Berland | Dixon and Carol Doll | Mark Hulings |
| Avis Bidwell | Rich and Marilee Donaldson | Cleve* Humbert |
| Bill and Phyllis Binford | Joe and Sherry Downey | Helen Hurley |
| Jim and Twila Blakely | Loring and Kathryn DuBois | Bryce Huschka |
| Jerry and Barbara Boettcher | Candy Duncan | Mark and Mary Hutton |
| Nadalie Bosse and Larry Nettles | Terrence and Peggy Dunn | Carl and Mary Ice |
| Thomas and Una Bowman | Charles and Jean Eby | Chuck Jasper and Pat Friesen |
| Marlin Breer and Joan Russell | Gary and Peggy Edwards | Jim and Laura Johnson |
| David and Pat Britton | Larry and Laurel Erickson | Bruce and Jeane Johnson |
| Frank and Elizabeth Burke | Ike and Letty Evans | Neal and Susan Johnson |
| Chuck and Linda Burton | Judith Fan and Robert Reay | Gary and Helen Johnston |
| Gene Carter and Rita Rodriguez | Jim and Lisa Garrison | Min-Hwan and Yu-Fan Kao |

- Dean and Nancy* Kays
 Rich and Hannah Kerschen
 Steve and Linnea Kirchhoff
 Drake and Eileen Knapp
 Sam and Mary Knecht
 Donna Kottwitz and Mark Larson
 Thayne and Leona Kraus
 Linda Lee and Joe Moffitt
 Don Lenhart
 Alan and Jan Levin
 Ken and Lin Lewis
 TW and Tzi Lin
 Sam and Martha Logan
 Harold Lonsinger
 Scott and Karen Love
 Pau and Janet Lu
 Mike and Cindy Manley
 Dean and Lavon* Morton
 Laree Mugler
 Michelle Munson and Serban Simu
 Ed and Jan Murray
 Dick and Mary Jo Myers
 Diana and Raj Nathan
 Jane Neff
 Carl Nuzman
 Dale Olson
 Gerald and Arlene Oppliger
 Jeanette Otto
 Tom and Connie Paulson
 Perry and Virginia Peine
 Charley Ponton
 Van* and Sharon Pooler
 Keith Pugh
 Joan Ransom
 Don and Lynne Rathbone
 Fern Rector
 Virginia Richardson
 Stan and Donna Rieb
 James and Virginia Riggs
 Warren Rosebraugh
 Dennis and Andrea Rottinghaus

- Dennis* and Merlene Ruckert
 Ann and Donald Schaechtel
 Jesse and Sabra Schriener
 Jim and Linda* Schroeder
 Kenneth Sellers
 Debbie Selsor
 Rhea and Pat Serpan
 Jim and Robin Siefkin
 Hal* and Mary Siegele
 Dean and Sharon Skaer
 Doug and Cindy Smith
 Sarah Smith
 Allen Smoll*
 Bob and Lila Snell
 Virgil and Jane Snell
 Doris Spray
 John and Martha Stack
 Warren and Mary Lynn Staley
 Karen Stryker
 Ken Stuckey
 Bob* and Ann* Syler
 Alan and Sharon Sylvester
 Jim and Marty Tadtman
 Tim and Sharon Taylor
 Steve and Kay Theede
 Del and Sharon Thielman
 Spencer and Susan Tholstrup
 Bob and Bernita Thorn
 Frank and Barb Tillman
 Bob and Betty Tointon
 John Tripp
 William and Mary Urban
 Ed and Eunice Wambsganss
 Vern and Loma Wegerer
 Richard Weidler
 John and Jill Weidman
 Jerry and Robin Westhoff
 Kerry and Donna Williams
 Chuck Wilson
 Kent and Mary Wray

* = deceased

Seaton Society members are recognized for their gifts of \$1,000 or more to the College of Engineering. The following contributed between July 1, 2014 and June 30, 2015.

Director — \$10,000

- John and Diane Ahern
 Tom Barrett
 Mary Ruth Bedford
 Marlin Breer and Joan Russell
 Bill and Gene Brungardt
 Stephen and Karen Clegg
 Gib and Brenda Compton
 Merle and Helen Converse
 Chris and Robin Covert
 Rich and Marilee Donaldson
 Candy Duncan
 Gary and Peggy Edwards
 Larry and Laurel Erickson
 Ike and Letty Evans
 Dennis and Debra Floyd
 Don Gemaehlich
 Art Grix and Linda Angold Grix
 Allan Halderman
 Wayne and Barbara Harms
 Lucile Hawks
 Duane Henderson
 Gabe Hernandez
 Kevin and Dianne Honomichl
 Bryce Huschka
 Kyle and Laura Huschka
 Jim and Suzanne Jaax
 Jim and Laura Johnson
 Neal and Susan Johnson
 Min-Hwan and Yu-Fan Kao
 Mark and Cindy Keenan
 Rick and Cheryl Kinder
 Drake and Eileen Knapp
 Craig and Deborah Koehn
 Donna Kottwitz and Mark Larson
 Dave and Hope Krug
 Don Lenhart
 Alan and Jan Levin

- Thomas and Loraine Lindley
 James Logbeck
 Harold Lonsinger
 Scott and Karen Love
 Steve and Donna McKinnis
 Dean and Lavon* Morton
 James and Jean Mosimann
 Laree Mugler
 Michelle Munson and Serban Simu
 Ed and Jan Murray
 Jane Neff
 Tom and Connie Paulson
 Cathy and Tom Ritter
 Dennis and Andrea Rottinghaus
 Dan and Marsha Ryser
 Justin and Jessica Salmans
 Jesse and Sabra Schriener
 Randy Sedlacek and Mary Ventura
 Rhea and Pat Serpan
 Mary Siegele
 Dean and Sharon Skaer
 Randy Smischny
 Warren and Mary Lynn Staley
 Doug and Connie Sterbenz
 James and Deborah Stonehocker
 Karl and Monica Svaty
 Tim and Sharon Taylor
 Steve and Kay Theede
 Spencer and Susan Tholstrup
 Duane and Terry Townley
 Marge Townley
 Ben and Jen Tryon
 Cindy Wallis-Lage and Kent Lage
 Ed and Eunice Wambsganss
 John and Jill Weidman

Roll call continues on next page

The Society

In the spirit of the legacy of Roy Andrew Seaton, the longest serving dean in the history of Kansas State University College of Engineering, the Seaton Society was established in 1999 to recognize donors who provide significant annual gifts to support the College of Engineering.

The impact of Seaton Society donors is seen in every aspect of the college as it moves forward in excellence of engineering education. Initiatives supported by these funds include the following:

- discretionary gifts to the dean or department heads
- scholarships to recruit new students, recognize academic excellence and retain those with financial need
- student leadership organizations and activities
- student participation in competitions and leadership opportunities
- special projects and professional development for faculty

Membership Levels and Benefits

Membership in the Seaton Society recognizes all who contributed \$1,000 or more between July 1, 2014, and June 30, 2015, to any area within the College of Engineering. Corporate gifts that match employee contributions are counted.

Donors may renew their membership each year by making a gift at one of five levels. The exception is the Founder Level; these donors, at the dean's invitation, receive lifetime membership for their extraordinary support of the vision and mission of the college.

Founder: \$100,000+

Director: \$10,000+

Executive: \$5,000 to \$9,999.99

Partner: \$2,500 to \$4,999.99

Leadership Circle: \$1,000 to \$2,499.99

Members are invited to attend the annual Seaton Society Banquet, are listed in both Impact and the annual report, and are included in periodic area/regional events and campus activities.



Executive — \$5,000

Greg and Debbie Allison
 Christopher Althoff and Jamie Yates
 Dave and Pam Beardmore
 Brad and Penny Beecher
 Brock Beran
 Avis Bidwell
 Charles and Delores Blaser
 Nadalie Bosse and Larry Nettles
 Dave and Anne Braun
 Daniel and Judi Burk
 Stephen and Ruth Dyer
 Judith Fan and Robert Reay
 Dave and Kay Fritchen
 Jim and Nancy Gieber
 Gordon and Joyce Goering
 Mike and Karen Hafling
 Jim Hengelfelt*
 Dana Heston
 Thomas and Rebecca Hopkins
 Mark and Mary Hutton
 Bradley and Amy Jeanneret
 Rich and Hannah Kerschen
 Steve and Linnea Kirchhoff
 Charles and Linda Kuhn
 Jane Ley
 John and Mildred Lindholm
 Peter and Carol Maa
 Scott Matus
 Tom and Joan Mistler
 Rod Noble
 Rich and Sarah Porter
 Morgan and Kaye Powell

Barry and Marcia Robinson
 Warren and Teresa Ross
 Marshall and Kathleen Short
 Virgil and Jane Snell
 Robert and Anne Stone
 Marilyn and Bill Taylor
 Jeff and Lisa Vander Laan
 Tony and Denise Veith
 Lou and Jenn Von Thauer
 Chuck Wilson
 Meg and Kris Yaege

Partner — \$2,500

Sylvia Apple
 Jerry and Barbara Boettcher
 Matthew and Lynn Dassow
 Ray and Alysia Dempsey
 Edwin and Casee Eisele
 Bill and Dorothy Funk
 Jim and Lisa Garrison
 Bill and Tina Goodman
 Preston and Norma Goodwin
 Leslie and Justin Gordon
 Rex and Becky Hillman
 Phil and Jeannie Hollis
 Rodney and Kay Horn
 Henry and Chai-Chong Hwang
 David and Jane Kelling
 Steve and Mary Jane Kirkwood
 Brad and Joyce Kramer
 Y J and Jochun Lai
 Linda Lee and Joe Moffitt
 Dirk and Heidi Maier

Zach Maier
 Snehal and Jyotika Patel
 Alison Peterson
 Julie and Daniel Rembold
 Mike Rogers
 Mark and Sara Schonhoff
 Larry and Barbara Schulte
 Robert Sextro
 Melainie and Jeffrey Smotrilla
 Bob and Lila Snell
 Al and Mary Stecklein
 Charles and Arlene Steichen
 Fred and Lois Stoller
 Larry and Eleanor Strecker
 Bob and Bernita Thorn
 Jennifer and Matt Vines
 Mike and Lynn Wieggers
 Don and Treva Wiruth

Leadership Circle — \$1,000

Diane and Thomas Adamec
 Rick and Marcia Adams
 Anil Anand
 Bryan and Celia Anderson
 Randall and Barbara Angell
 Roy and Donice Applequist
 William and Sue Aronson
 Jack and Alberta Bailie
 Bill and Beth Barrett
 Amy Bartak
 Gary and Sara Bartak
 Kim Bartak
 Paul and Teresa Bartak

David and Dayna Basel
 Walter Belter
 Gerald and Kim Benard
 Karl and Kristin Bennett
 Kevin and Lisa Berscheidt
 Jim and Twila Blakely
 Michael and Kathleen Brindley
 Mark and Brenda Brown
 Loyd and Patsy Brumfield
 Tom and Denise Carlisle
 David and Kathy Carr
 Parkson Cheong
 Ramin and Ashley Cherafat
 Mau and Shu-Fen Chow
 Gary and Barbara Clark
 Stan and LeAnn Clark
 Dave and Dwonne Cogswell
 Lee and Sherrye Cook
 Warren Corbet
 Dick and Mary Elizabeth Corbin
 Roger and Nancy Coulter
 Nancy and Michael Czinege
 Laurie Davidson and
 Dean Flanner
 Darold and Debbie Davis
 Ron and Kathy Davis
 Anthony and Theresa Dearth
 Lionel and Debra D'Luna
 Neil and Beth Dobler
 Chuck and Joan Dorgan
 Les Doty
 Jeff Dougan
 Bob DuBois

Matt Durst
 Charles and Jean Eby
 Norman and Janet Elliott
 La Verne Englert
 Blaine and Carolyn Englund
 Patrick and Rita Ervin
 Helen Fairbanks
 Roger Farrell and Trish Horn
 Kevin and Holli Forrest
 Kyle and Kimberly Franklin
 Jerry and Donna Friesen
 Jonnie Gaffin
 Jay and Tiffany Gaines
 Linda and Rich Gallagher
 Tara and Matthew Gazaway
 Darin George
 Christopher and Julie Gibson
 Stuart and Ginger Gillen
 Fred Gowdy
 Steven and Cheri Graham
 Jeffrey and Justyna Grant
 Erin Green
 Robert and Melanie Green
 Vance and Pam Green
 Jon and Belinda Greiner
 Chuck and Susie Grier
 Randy and Deb Groves
 David and DeAnn Haake
 Ken and Cynthia Habiger
 Marvin Hachmeister
 Janell and Todd Harman
 Allan and Carolyn Harms
 Milly and Joe Harner

Jason and Karen Hartman
 Tadhi and Douglas Hayes
 Clay and Ruth Heady
 Jan and Dick Hedges
 Brent and Bonnie Heidebrecht
 Dean Hiebert
 Ray and Marlene Hightower
 Jim and Jada Hill
 Mark and Beth Hodges
 Michelle Hoferer
 David and Janet Holsinger
 Carl and Terri Hopkins
 Darrell and Nancy Hosler
 Ed and Ming Hsu
 Kay Hummels
 Matthew James
 Jay and Elizabeth Jayapalan
 Jeff and Jeanne Jelinek
 Eric Johnson and Pam Dlabal
 Jim and Judy Johnson
 Lawrence and Bernice Johnson
 Kenneth and Marilyn Johnston
 Clay and Lynette Jones
 Emily Jones
 Mark and Michelle Jones
 Jane and Nelson Jordan
 Frank and Gail Jurenka
 Miles and Courtney Keaton
 Warren and Gisela Kennedy
 William and Rebecca Kennedy
 Mike and Kristen Kifer
 Nicola Kinzie
 Kelly Klover

Paul and Carol Klover
 Robin and Lynn Klover
 Bruce and Linda Koe
 Jim and Susan Koelliker
 Dorothy and Wellington Koepsel
 Paul Kolbeck
 Stacia Kolbeck
 Dave and Angie Konda
 Todd and Julie Korte
 Larry Kraus
 Merle and Phyllis Krause
 Scott and Staci Kring
 Mike and Vera Lackey
 Roger Lanksbury
 Jim and Diana Lee
 Jeffrey and Joy Lessman
 Jeanenne and Blase Leven
 Thomas and Nancy Logan
 Kristin and Nick Macaluso
 Kit and Stephanie Mailen
 Harry and Elaine Manges
 Jerry and Lori Marr
 Larry Martin
 Nancy and John Matthews
 Mick and Nancy McAuliffe
 Mike and Kristi McCluskey
 Warren McElroy
 Bill McKinney
 Mary and Edward McLachlan
 Kirk and Teresa Miller
 William and Lee Monroe
 Monte and Staci Montgomery
 Robert and Barbara Moyer

Ed and Jeanne Mulcahy
 Virg and Marj Musil
 Dick and Mary Jo Myers
 Dave Nall
 Kent and Trina Nettleingham
 Matt and Kathleen Nordhus
 David and Deborah Orr
 Jeanette Otto
 Terry and Marian Parsons
 Gary and Janice Pinkston
 Keith Pugh
 Anita Ranhotra
 Gur and Tej Ranhotra
 Kay Rasmussen
 Don and Lynne Rathbone
 Carl and Dixie Reed
 Doug and Becky Reid
 Roger and Brenda Reynolds
 Scott and Elizabeth Riekeman
 Haven and Barbara Rolander
 Wayne and Nancy Ross
 Grover Rundell
 Ann and Donald Schaechtel
 Vicki Scharnhorst and
 Brent Johnson
 David and Nola Schettler
 Michelle and Andrew Schlie
 Jane Schreiber
 Jim Schroeder
 Kirk and Noel Schulz
 Linda Schuman
 James and Barbara Shaneyfelt
 Richard and Marian Shimer

Larry and Debbie Slupianek
 Mitchell and Molly Snyder
 Bill and Susan Stannard
 Austin and Joan Stedham
 Kenneth and Coleta Suiter
 Gary and Lola Swanson
 Peggy Taylor
 Norman and Donna Tetlow
 Del and Sharon Thielman
 Ron and Heather Thomas
 Madhu and Madhuri Thota
 Bob and Betty Tointon
 Edward and Dorothy Travnicsek
 Deaun Trayer
 Kevin Trendel
 Thomas and Peggy Waggoner
 Donghai Wang and Susan Sun
 Kang-Bo and Su-Huei Wang
 Kenneth and Beth Ward
 Keith and Diana Warta
 Vern and Loma Wegerer
 Drew Westcott
 Jerry and Robin Westhoff
 Herb and Mary Sue Whitney
 Brian and Cheryl Wichman
 Bradford and Cynthia Wick
 Patrick and Carolyn Wilburn
 Audrey and Paul Williams
 John and Mary Wilson
 Gary and Judy Wurdeman
 Dennis and Madelyn Yeo
 Pat Zrubek

Every effort has been made to produce a comprehensive listing of donors for the calendar year July 1, 2014, to June 30, 2015. We apologize for any incorrect listings, misspellings or omissions, and extend our sincere thanks for your support. Questions about the donor list should be directed to Brett Larson, Senior Director of Development, College of Engineering, Kansas State University Foundation, 1800 Kimball Ave., Suite 200, Manhattan, KS 66502; 785-532-7519 or 800-432-1578.



RECOGNITIONS

1969

William H. "Bill" Maxwell (CE, M.S. '73), Raleigh, North Carolina, recently retired from the U.S. Environmental Protection Agency after more than 29 years of service.

1983

Mitch Snyder (EE), Ft. Worth, Texas, has been named president and CEO of Bell Helicopter. He joined the company in 2004, and has held several leadership positions, serving most recently as executive vice president of military business. Snyder is the 2015 College of Engineering Alumni Fellow.

1984

Tim Austin (CE), Wichita, Kansas, was installed as president of the National Society of Engineers at the group's 2015 annual conference in July in Seattle. He is a project manager for Kaw Valley Engineering in Wichita and a licensed professional engineer.

1994

Anita Ranhotra (IMSE, MEM '01), Lenexa, Kansas, received the award of 2015 Fellow from the Institute of Industrial Engineers.

2004

Bryan Meyer (ME), Shawnee, Kansas, has joined Shook, Hardy and Bacon, LLP, Kansas City, Missouri, as a patent attorney. He prepares and prosecutes U.S. and international patent applications for businesses and inventors worldwide.

2007

Michael Panethiere (EE, M.S.), Olathe, Kansas, joined the engineering faculty at the University of Kansas as a professor of practice in the department of civil, environmental and architectural engineering, teaching electrical power systems engineering and construction management courses. He has worked as a consulting engineer in building power systems design for more than 30 years, the last 17 as principal of his own firm, M. Panethiere and Associates, P.A., Consulting Engineers.

We are interested in following the career paths and accomplishments of our alumni, focusing on promotions, advancements, awards and honors, job changes and of course, retirements, as well as death notices. Please send your information in these categories to —

Impact Editor College of Engineering, 128 Dole Hall, Manhattan, KS 66506
email: impact@engg.ksu.edu

DEATHS

1949

Charles L. Snail (EE), Wheaton, Illinois, died June 6, 2015. He was employed by Line Material Corporation, and when he retired in 1988 was a senior apparatus engineer supporting 15 sales engineers in 13 Midwestern states. He is survived by his wife of 68 years, Jane, one daughter, four sons and eight grandchildren.

1956

John Dollar (EE, M.S. '66), Manhattan, Kansas, died July 18, 2015. He was a professor at Kansas State University in the electrical engineering department; served as assistant dean of engineering at K-State; and served as dean of arts and sciences, dean of business administration and dean of engineering technology at the K-State Salina campus. He is survived by his wife, Diane, one daughter, one son and one grandson.

1958

Lawrence "Larry" E. Meyer (EE), Peoria, Arizona, died Sept. 30, 2015. He began his career at Wagner Electric in St. Louis, and then worked at Boeing in the Seattle area for more than 20 years, after which he retired and moved to the Phoenix area. He is survived by his wife, Marcia, and two daughters.

David W. Stone (EE), Lees Summit, Missouri, died Oct. 15, 2014. He had retired from Allied Signal Corp., Kansas City, Missouri, in 1992.

1961

N. Dean Eckhoff (NE, M.S. '63, Ph.D. '68), Wichita, Kansas, died Sept. 3, 2015. After completing his doctorate, he joined the K-State faculty of nuclear engineering, later being named department head, a position he held until his retirement in 2002. He is survived by his wife, Eulonda, one son, one daughter and two grandchildren.

Faculty

Ross I. Pauli, Manhattan, Kansas, died Aug. 7, 2015. He had retired from the mechanical engineering department at Kansas State University in 1983 after being on the faculty for 36 years. He is survived by two sons, one daughter, four grandchildren and four great-grandchildren.

News from around the college

CLARK REAPPOINTED AS SENIOR ASSOCIATE DEAN

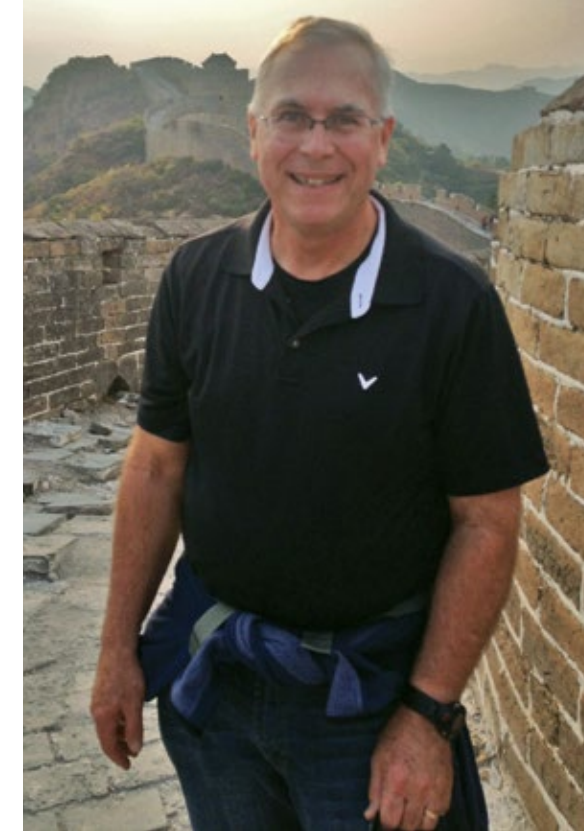
Gary Clark, following a five-year review and recommendation of an advisory committee, has been reappointed as senior associate dean for the College of Engineering.

In serving in this capacity since January 2009, Clark has been responsible for oversight of college academic programs, recruitment, scholarship programs, diversity and inclusion programs, computing services, and assurance with compliance with accreditation requirements and processes.

Most recently, Clark had served as interim dean of engineering from May 2013 to July 2014 while the college conducted a nationwide search for a new dean.

He joined the College of Engineering faculty in 1994 as an associate professor of biological and agricultural engineering, was promoted to full professor in 1997 and was named to head the department in 2005.

Clark earned both a bachelor's and master's degree at the University of Florida, and a Ph.D. from Texas A&M University, all in agricultural engineering.



GARY CLARK

CLARK AT THE GREAT WALL, LEFT, VISITED CHINA THIS FALL AS AN INVITED SPEAKER AND SESSION MODERATOR FOR THE IRRIGATION IN ACTION SYMPOSIUM AT CHINA AGRICULTURAL UNIVERSITY IN BEIJING. HE ALSO PROVIDED AN INTRODUCTION TO ABET AND ASSESSMENT PROCESSES TO THE COLLEGE OF WATER CONSERVANCY AND CIVIL ENGINEERING AT THE CHINA AGRICULTURAL UNIVERSITY.

LEADERSHIP CHANGES FOR ENGINEERING DEVELOPMENT TEAM



LORI ROGGE, LEFT, AND BRETT LARSON

Lori Rogge, senior director of development for the College of Engineering, resigned her position in October in order to pursue family business interests. She joined the college in 2011, leading the formulation and implementation of plans in support of individual and corporate philanthropy.

"Lori has worked tirelessly in support of our college," said Darren Dawson, dean of the College of Engineering. "She has led our development team in record-breaking financial giving during the past four years. Alumni, friends, colleagues and the university community as a whole will miss Lori's energy, enthusiasm and professionalism."

Replacing Rogge in the role of senior director of development will be Brett Larson, who had previously served as director of development. A part of the College of Engineering team since 2012, Larson had been in charge of oversight, expansion and execution of annual fundraising strategies.

"I have no doubt Brett will step in and continue to lead the college on its successful trajectory of providing resources for our faculty, staff and students. He will continue a donor-centered approach that builds strong relationships with our alumni, friends and corporate partners," Dawson said.

NOTICE OF NONDISCRIMINATION

Kansas State University prohibits discrimination on the basis of race, color, ethnicity, national origin, sex (including sexual harassment and sexual violence), sexual orientation, gender identity, religion, age, ancestry, disability, genetic information, military status, or veteran status, in the University's programs and activities as required by applicable laws and regulations. The person designated with responsibility for coordination of compliance efforts and receipt of inquiries concerning nondiscrimination policies is the University's Title IX Coordinator: the Director of the Office of Institutional Equity, equity@k-state.edu, 103 Edwards Hall, Kansas State University, Manhattan, Kansas 66506, (785) 532-6277. The campus ADA Coordinator is the Director of Employee Relations, charlott@k-state.edu, who may be reached at 103 Edwards Hall, Kansas State University, Manhattan, Kansas 66506, (785) 532-6277.

Revised July 7, 2015.

**Dean's advisory council — current members**

Sue Barsamian EE '81
Stan Clark BAE '67, '71
Gib Compton CNS '80
Lynda Dawson NE '83
Ray Dempsey IE '90
Chuck Grier CNS '73

Kendall Harris
Steve Johnson IE '75
Mike King
Steve Kirchhoff ME '79
Raj Nathan
Tom Paulson CE '73

Randy Pope EE '77
Vicki Scharnhorst CE '82
Mark Schonhoff CS '88
Sabra Schriener EE '92
Doug Sterbenz ME '85
Robin Sterling CNS '94

Spencer Tholstrup CHE '81
Cindy Wallis-Lage CE '85
Keith Warta CE '84
Mike Wieggers EE '82
Warren Kent Wray CE '68
Meg Yaeger ME '79, '84